

Pilot and Signaling Devices

Heavy-Duty 30.5 mm Watertight/Oiltight Selector Switches

Section 9

CR104P

Knob Operated

Non-Illuminated

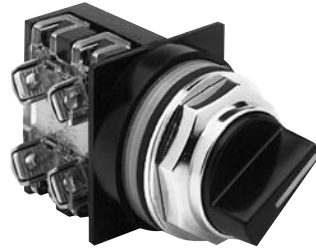
600 Volts Max. AC/DC

10 Amperes Continuous

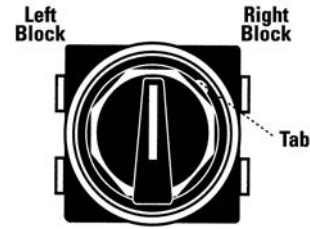
Units are supplied factory-assembled when ordered with contact block.

Product Number and price do not include nameplate. All nameplates must be ordered as a separate item.

Suitable for use in NEMA Type 1, 3, 3R, 4, 4X, 12, and 13 applications., when mounted in enclosures rated for those same applications. For some NEMA Type 4X applications, protective caps will improve corrosion resistance.



Knob-Operated Selector Switch



Contacts viewed from front of panel.

3-Position - Black Knob¹ - Spring Return C←R

Release Type	3 Position Cam Code	Contact Configuration	Product Number ¹
Spring Return C ← R	4	None	CR104PSG84B
Spring Return C ← R	4	1NO-1NC	CR104PSG84B91
Spring Return C ← R	4	2NO-2NC	CR104PSG84B92
Spring Return C ← R	2	None	CR104PSG82B
Spring Return C ← R	2	1NO-1NC	CR104PSG82B91
Spring Return C ← R	2	2NO-2NC	CR104PSG82B92
Spring Return C ← R	3	None	CR104PSG83B
Spring Return C ← R	3	1NO-1NC	CR104PSG83B91
Spring Return C ← R	3	2NO-2NC	CR104PSG83B92
Spring Return C ← R	5	None	CR104PSG85B
Spring Return C ← R	5	2NO-2NC	CR104PSG85B92
Spring Return C ← R	6	None	CR104PSG86B
Spring Return C ← R	6	2NO-2NC	CR104PSG86B92

3-Position - Black Knob¹ - Spring Return L→C←R

Release Type	3 Position Cam Code	Contact Configuration	Product Number ¹
Spring Return L → C ← R	4	None	CR104PSG94B
Spring Return L → C ← R	4	1NO-1NC	CR104PSG94B91
Spring Return L → C ← R	4	2NO-2NC	CR104PSG94B92
Spring Return L → C ← R	2	None	CR104PSG92B
Spring Return L → C ← R	2	1NO-1NC	CR104PSG92B91
Spring Return L → C ← R	2	2NO-2NC	CR104PSG92B92
Spring Return L → C ← R	3	None	CR104PSG93B
Spring Return L → C ← R	3	1NO-1NC	CR104PSG93B91
Spring Return L → C ← R	3	2NO-2NC	CR104PSG93B92
Spring Return L → C ← R	5	None	CR104PSG95B
Spring Return L → C ← R	5	2NO-2NC	CR104PSG95B92
Spring Return L → C ← R	6	None	CR104PSG96B
Spring Return L → C ← R	6	2NO-2NC	CR104PSG96B92

¹To order knob in a color other than black, replace the "B" in listed Product Numbers with E (Yellow), G (Green), L (Blue), or R (Red).

3-Position Selector Switches - Non-Illuminated

Operator Position	Cam #4		Cam #2		Cam #3		Cam #5		Cam #6	
	Type of Contact Block	Mounting Location Left/Right	Type of Contact Block	Mounting Location Left/Right	Type of Contact Block	Mounting Location Left/Right	Type of Contact Block	Mounting Location Left/Right	Type of Contact Block	Mounting Location Left/Right
O O X	NO	L or R	—	—	NO	L or R	NO	L or R	NO	Left
O X O	—	—	NC	L or R	NC	L or R	NC	Right	—	—
X O O	NC	L or R	NO	L or R	—	—	NC	Left	NO	Right
X X O	—	—	—	—	—	—	—	—	NC	Left
O X X	—	—	—	—	—	—	—	—	NC	Right

In the product number of a selector switch, the cam is identified by the fifth figure after the "104".

Example: CR104PSG2 1 B, the cam number is 1.

4-Position - Black Knob¹

Release Type	4 Position Cam Code	Contact Configuration	Product Number ¹
Maintained	7	None	CR104PSG47B ²
Maintained	7	2NO-2NC	CR104PSG47B92 ²

¹To order knob in a color other than black, replace the "B" in listed Product Numbers with E (Yellow), G (Green), L (Blue), or R (Red).

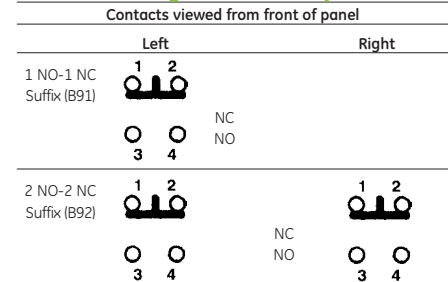
²Two double-circuit contact blocks, mounted side-by-side, is standard arrangement.

No more than two contact blocks, single and/or double, may be used with this operator.

4-Position Selector Switch - Non-Illuminated

Operator Position	Cam #7				Type of Contact Block	Mounting Location Left-Right
	1	2	3	4		
X O O O	—	—	—	—	NC	Left
O O X O	—	—	—	—	NO	Left
O O O X	—	—	—	—	NC	Right
O X O O	—	—	—	—	NO	Right

Schematic Diagrams - Factory Forms



Numbers and letters are molded into blocks at terminals.



Nameplates: See pages 9-40 to 9-41
Technical Data: See pages 9-48 to 9-49
Drilling Plans and Dimensions: See page 9-49

Product Number Selection Instructions: See pages 9-2